

FIETSCOMMUNITY 3.0 AGENDA CONTACT

CYCLING COMMUNITY



HOME BIJDRAGEN BLOGS NIEUWS ARCHIEF

COMMUNITY KENNISBANKEN KENNISPLATTEGROND

NIEUWS TICKER > [2024-08-20] Geen fiets, geen werk:

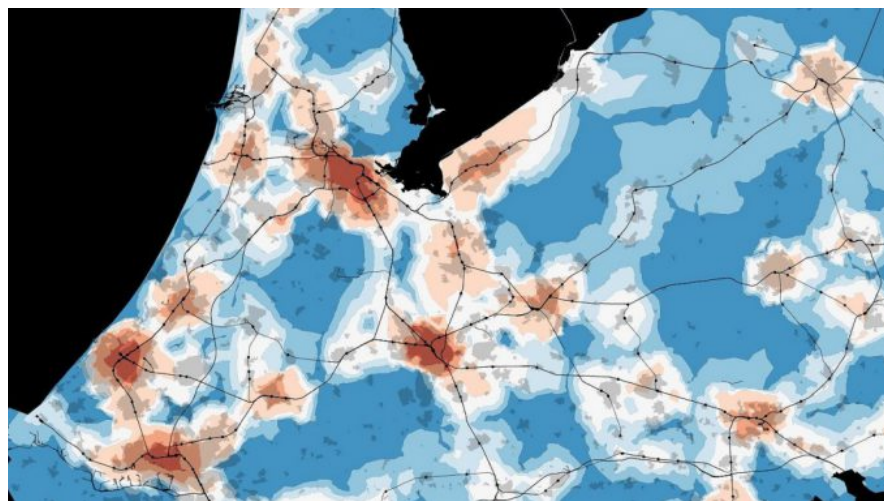
SEARCH ...

HOME > ARCHIEF > Bicycle–train combination

Bicycle–train combination

UVA

© 2017-01-20 RobvdBijl Archief



Domeinen: **(E1) Effectieve mobiliteit** Kringen: **(C1) Bovenbouw**
Onderzoekstypen: **(R1) Wetenschappelijk**

Projectnaam

Bicycle-train combination

Onderzoekstypen	R	1	2	3	4	5	1	2	3	4	5	1	2	3	4	5
Domeinen	E	1	<input checked="" type="checkbox"/>	<input type="checkbox"/>	<input type="checkbox"/>	<input type="checkbox"/>	<input type="checkbox"/>	<input type="checkbox"/>	<input type="checkbox"/>	<input type="checkbox"/>	<input type="checkbox"/>	<input type="checkbox"/>	<input type="checkbox"/>	<input type="checkbox"/>	<input type="checkbox"/>	<input type="checkbox"/>

UITGELICHT



Verhuizen / Moving

© 2024-12-19



Cycling professor appointed at Ghent University

© 2024-01-30



8th Annual Meeting of the Cycling research board

© 2023-12-21



7th Annual Meeting of the Cycling research board

© 2023-10-30

Bicycle–train combination

Projecteigenaar

UvA (Luca Bertolini), NWO, Min. IenM, Platform31

Projectomgeving

UvA, Fietsersbond, CROW

Projectonderzoeker of -uitvoerder

Roland Kager (in co-operation with UvA)

Trekker Fietscommunity

Rob van der Bijl (RVDB Urban Planning & GoDutchCycling)

Tweede contact

Dutch Rail Sector

Trigger

The role of the bicycle as an egress and access mode for multimodal nodes. An exploration of the synergy of bicycles and public transport, leading up to a scientific research agenda. The bicycle–train combination provide for strong synergy when combined in a single trip chain. This synergy generates an integrated transport system that is both fast (because of the train) and flexible (because of the bicycle).

Domeinen / Domains

(E1) Effective mobility / Effective mobility

Kringen / Circles

(C1) Bovenbouw / Superstructure

Onderzoekstypen / Types of research

(R1) Wetenschappelijk / Scientific

Samenvatting / Summary



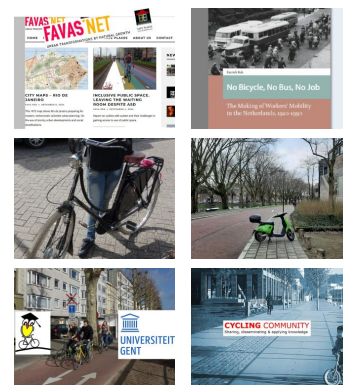
Summer Update Cycling Community

🕒 2023-07-26



10 jaar Fietscommunity

🕒 2023-06-12



REDACTEUREN



FC RED.

published 68 articles



BELLA BLUEMINK

published 65 articles



ARJEN KLINKENBERG

published 46 articles



ROBVDBIJL

published 6 articles

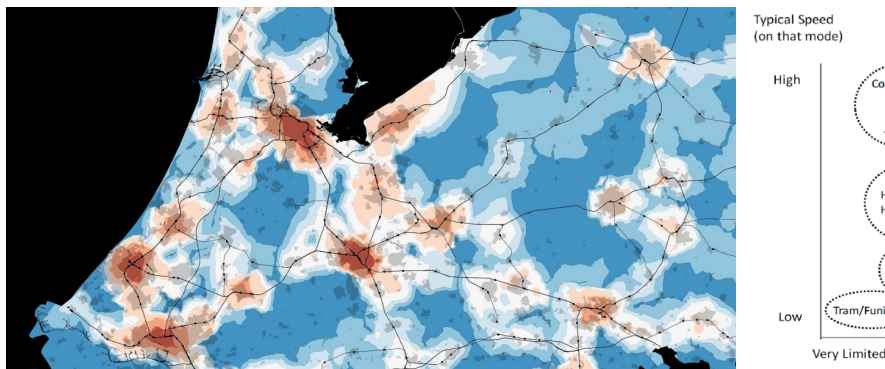
The main scientific result is the notion that combined usage of bike and transit



– for many applications – need be treated a distinct transport system rather than the simple juxtaposition of two separate systems. This is considered a major new insight, actually surpassing initial expectations, bearing implications for research and practice alike, and of direct relevance for any of the stated research questions. Furthermore, instead of just focusing on individual components (e.g. bike parking facilities at stations), we have provided much broader insights into the role of the bike for transit systems (and vice versa).

Uw tags / Your tags

Station catchment areas, public transport, cycling, transport system analysis, urban transport



Beschrijving / Description

Doel en opzet / Aim and plan

In the Netherlands, the share of cycling used in combination with other modes has increased significantly in recent years. The joint use of train and bicycle has increased in particular. The bicycle is traditionally mainly used as an access mode and mainly in conjunction with trains. Often, it is stated that the bike extends the catchment-area of public transport or multi-modal nodes, but its counterpart is true as well; multi-modal travel improves the business case for the bicycle. Aim of this study is to extend theoretical background on these trends. The main scientific results are the answers to the three research questions. This will

contribute to the existing knowledge by (1) extending the conceptual framework in which to analyse the use of the bike as an access and egress mode and assess its growth potential and (2) incorporate the effect of recent trends in the explanation of the actual and potential patterns of use.

Organisatie en financiering / Organization and funding

NWO

Periode en beschikbaarstelling / Organization and funding

November 2013 – September 2014

Werkpakketten / Workpackages

Research Question 1: How can bicycle access and bicycle egress trips be interpreted as part of a larger integrated land-use/transport system? In which fundamental ways does the use of bicycles in access and egress trips change the functioning of a (system of) multi-modal nodes?

Research Question 2: What is the independent effect of bicycle parking facilities in the functioning of these land-use/transport systems? And how can the framework identified in research question 1 be extended by adding bicycle parking facilities as a third dimension?

Research Question 3: How can decisions to use the bicycle for access or egress trips be framed in a conceptual model using a system dynamics methodology? Which diversity of aspects, conditions and possibilities seem relevant for different trip, location or population segments?

Toepassingen / Applications

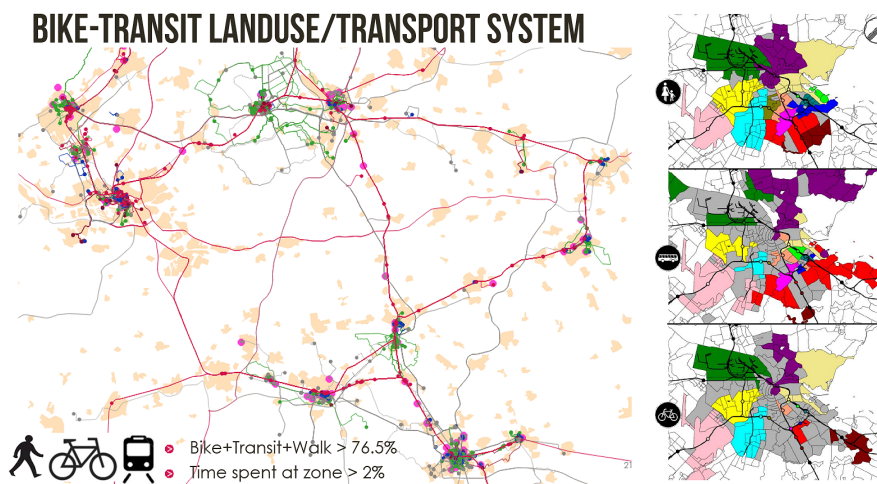
Dedicated articles on bike-train usage based on the research findings have been published in major professional journals such as OV-Magazine, Verkeerskunde and Verkeer in Beeld, whereas contributions have been made to broader articles published in Rooilijn and Binnenlands Bestuur but also for articles in newspapers (Trouw, Parool) and social media (we started a successful twitter account @fietsprofessor and @biketrainguru). For a full overview, please contact researchers. Part of the above

contributions has appeared online as well, retrievable by googling on terms like 'trein fiets kager'.

In addition to the research output we delivered valued contributions to professional congresses (e.g. Railforum June 5, 2014, VerDuS congress June 17/18 2014); in-house discussion on case studies (e.g. municipality of Amsterdam, urban region of Arnhem-Nijmegen and region of Amsterdam); introductions to the theme and its research for many dozens of professional contacts, working at government bodies, consultancy agencies, transit companies, interest groups, research colleagues, students and journalists; prolonged contacts with the 15 professionals invited for the two group model building sessions organised during the project and the 80 members of the Community of Research and Practice.

Overige / Other

None.



Achtergronden / Backgrounds

Aanvullingen / Additions

None.

Publicaties en referenties / Publications and references

Kager, L. Bertolini, M. Te Brömmelstroet, Characterisation of and reflections on the synergy of bicycles and public transport. Transportation Research Part A – 85 (2016) 208–219

<http://www.sciencedirect.com/science/article/pii/S0965856416000240>

Betrokken maatschappelijke partijen / Involved social stakeholders

ProRail, NS

Gerelateerde projecten / Related projects

Kim-Essay 'Toekomstbeelden van het fietsgebruik in vijf essays'

Gerelateerde toepassingen / Related applications

P.M. (mogelijk bijvoorbeeld: potentiële opschaling OV-fiets)

Vervolgonderzoek / Follow-up research

Kim-onderzoeksproject Fiets-Treingebruik (data-verzameling)

Links

Online deliverables (English)

– <http://www.sciencedirect.com/science/article/pii/S0965856416000240>

– <http://www.nationaalfietscongres.nl/cycling-cities/pdf/10.-Roland-Kager.pdf>

– http://www.dialoog.verdus.nl/upload/documents/Pres_Roland_Kager.pdf

– http://www.dialoog.verdus.nl/upload/documents/Pres_Kager_Dag_2.pdf

– http://kollektivforum.no/getfile.php/Kollektivforum/Arbeidsseminar/15-12-08_KollektivSeminar_BikeAndTrain_Roland_Kager.pdf

Online deliverables (Dutch)

– <https://www.shapingsociety.nl/file/1468408690.5568QETHUW/14062016-presentatie-ui-compressed-.pdf> (slide 62-98)

- https://epublicatie.minienm.nl/toekomstbeelden-van-het-fietsgebruik-in-vijf-essays#/slide_dekrachtvandetrein_fiets
- <http://www.fietsberaad.nl/?repository=fietsberaadpublicatie+26> (Chapter 3)
- <http://www.acquirepublishing.nl/verkeer-in-beeld/tastbare-beleidsknoppen-om-fietsgebruik-te-benvloeden>
- <http://www.acquirepublishing.nl/verkeer-in-beeld/stem-trein-af-op-de-fiets>
- <http://www.railforum.nl/wp-content/uploads/2014/06/Presentatie-Fiets-en-trein-Roland-Kager.pdf>
- <http://www.verdus.nl/upload/documents/Roland%20Kager%20Fiets%20in%20voor-%20en%20natransport.pdf>
- http://wiemaaktnederland.nl/wp-content/uploads/2014/10/15-04-21_TreinFiets_Modaliteit_RolandKager-2.pdf

Andere media / Other media

Twitter account Roland Kager: <https://www.twitter.com/biketrainguru>

Tekst- en beeldrechten / Text and image credits

Roland Kager et al.

Contactgegevens / Contact data

<https://www.linkedin.com/in/rolandkager/>

<https://www.studiobereikbaar.nl/team/> – Roland Kager



CYCLING ASSESSMENT

STATE OF THE ART CYCLING



« PREVIOUS

NEXT »



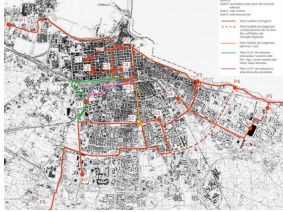


Tour de Force
lanceert Agenda
Fiets 2017-2020

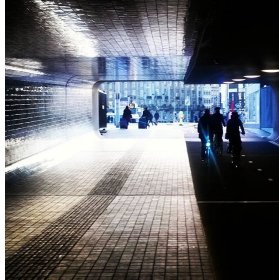
DCA – Make
America Cycle
Again



RELATED ARTICLES



**Italian City
Cycling
Assessment**



Two cycling cities

[FIETSCOMMUNITY 3.0](#)

[AGENDA](#)

[CONTACT](#)

[CYCLING COMMUNITY](#)

© Fietscommunity 2013-2023