

# International City Cycling Assessment



Dutch Cycling Embassy

- > [www.dutchcycling.nl](http://www.dutchcycling.nl)
- > [info@dutchcycling.nl](mailto:info@dutchcycling.nl)

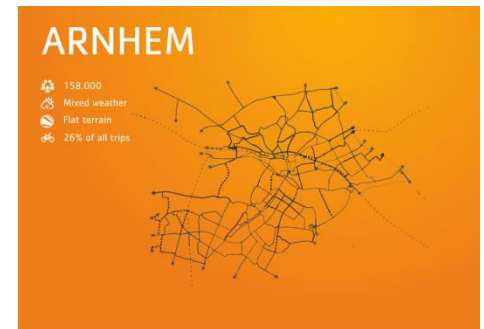
**Rob van der Bijl**  
**Maurits Lopes Cardozo**



September 2018 (v2.1)

# ICCA – Assessments so far

Aalborg (Denmark); Arnhem, Eindhoven, Groningen (Netherlands); Bari, Lecce, Milan (Italy); Bergen (Norway); Calgary (Canada); Cambridge (UK); Bogotá (Colombia); Ghent (Belgium); Isfahan (Iran); Turku (Finland); Moscow (Russia); Munich (Germany); Sofia (Bulgaria); etc...



## Map of Cities

Below represents a map of the seven international cities that have been included in the City Cycling Assessment.

1. Ghent, Belgium
2. Turku, Finland
3. Munich, Germany
4. Isfahan, Iran
5. Aalborg, Denmark
6. Bari, Italy
7. Calgary, Canada



## Italian City Cycling Assessment

DUTCH CYCLING EMBASSY

October 26, 2016 • Robvdbilj • Projecten



Domainen: (E1) Effectieve mobiliteit, (E2) Efficiënte stad, (E3) Economie Kringen; (C2) Middenveld  
Onderzoekstypen: (R4) Toegespast beleidsmatig

Projectnaam: Italian City Cycling Assessment  
Projecteigenaar: Dutch Cycling Embassy

Indicatoren	R1	1	2	3	4	5	6	7	8	9	10	11	12	13	14	15	16	17	18	19	20
1	0	0	0	0	0	0	0	0	0	0	0	0	0	0	0	0	0	0	0	0	0
2	0	0	0	0	0	0	0	0	0	0	0	0	0	0	0	0	0	0	0	0	0
3	0	0	0	0	0	0	0	0	0	0	0	0	0	0	0	0	0	0	0	0	0
4	0	0	0	0	0	0	0	0	0	0	0	0	0	0	0	0	0	0	0	0	0



# ICCA – Key elements



Mapped/depicted data and information: urban networks and structure. Demographic and topographic patterns. Additionally about climate and weather.

Atlas



Maps



Images



Number  
of  
inhabitants



Demography



Topography



Climate  
&  
weather

# ICCA – Key elements



Conditional data and information: all other modes of transport, amenities, ... Historic backgrounds and inspirational examples of other cities.

## Context



Example  
City



History



Amenities



Other  
mobility



# ICCA – Key elements



General data and information: users and usage regarding cycling. Actual and perceived quality of access, experience and safety.

## General



Cycling data



Usage



Users



Accessibility



Experience



Safety



# ICCA – Key elements



Physical elements: built environment, infrastructure and technology. Hence, facilities, buildings, vehicles, equipment, ...

## Hardware



Network & infrastructure



Logistics



Equipment



Technology



Cycling facilities



Management & maintenance



# ICCA – Key elements



Mental and virtual elements: ideas, plans, policies and programs. Also laws and rules. Moreover: education, training, instructions, information, ...

## Software



Ideas & proposals



Policy & programs



Designs & plans



Budgets



Projects & events



Promotion & information



Laws & rules



Guidelines & standards



Education & research



# ICCA – Key elements



Organisational and institutional elements:  
administrations, governments, foundations, ....  
Also: governance, enforcement, co-operation,  
engagement, partnerships, ...

## Orgware



Co-operation  
& organization



Administration  
& registration



Fora of  
Decision  
making



Financing  
& funding



Media





# ICCA – Start questionnaire



**The basic tool – v2.1**

**City** – <Name>

**Country** – <Name>

**Contact** – <Name, address>

**Date** – <DD/MM/YYYY>



**The basic tool**

International City Cycling Assessment

# ICCA – Basic questions



**Atlas**

**A1** – Number of inhabitants?

<value>

**A1a** – Additional numbers (e.g., urban region)

<value(s)>



Number  
of  
inhabitants

# ICCA – Basic questions



Atlas

A2 – Maps?

<separate data collection>

Example:  
Arnhem, Netherlands



Maps



# ICCA – Basic questions



Atlas

A3 – Images?

<separate data collection>

Example:

Arnhem, Netherlands



Images

# ICCA – Basic questions



Atlas

A4 – Additional information?

<separate data collection>



Demography



Topography



Climate  
&  
weather

# ICCA – Basic questions



## Context

**C1** – Are there bike parkings near (the) train station(s)?

<yes / no / sometimes>

**C1a** – Other relevant amenities?

<text>



Amenities



Other  
mobility

# ICCA – Basic questions



Context

C2 – Additional information?

<separate data collection>



History



Amenities



Other  
mobility



Example  
City

# ICCA – Basic questions



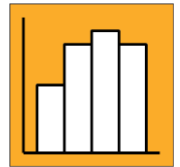
## General

**G1** – What have been effects of cycling on your city [last 5 years]?

For example:

Spatially, economically, environmentally, socially,  
or in general.

<text>



Effects



# ICCA – Basic questions



## General

**G2** – Modal split of cycling (all trips)?

<value / unknown>

**G2a** – Share of cycling in commuting?

<value / unknown>



Cycling  
data



Mobility  
data

# ICCA – Basic questions



## General

**G3** – What type of cyclists do you see in your city?

<sports / commuters / tourists / shoppers / scholars/ kids>

**G3a** – Do women cycle in your city?

<yes/no/rarely>



Cycling  
data



Mobility  
data



Users

# ICCA – Basic questions



## General

**G4** – How do most children go to primary school?  
Or to Secondary and High school?

<walking / cycling / PT / passenger in a vehicle>



Cycling  
data



Mobility  
data



Children

# ICCA – Basic questions



## General

**G5** – Has the number of all cyclists increased [last 5 years]?

<yes / no / unknown>

**G5a** – If unknown, what is a valid estimation?

<value / text>



Cycling  
data



Mobility  
data



Users

# ICCA – Basic questions



## General

**G6** – Has cycle safety generally increased [last 5 years]?

<yes / no / unknown>

**G6a** – If unknown, what is a valid estimation?

<value / text>



Cycling  
data



Safety



Users

# ICCA – Basic questions



## General

**G7** – Does the public consider cycling as a safe activity?

<yes / no / average>



Cycling  
data



Safety



Users

# ICCA – Basic questions



## General

G8 – Additional information?

<separate data collection>



Accessibility



Cycling  
data



Experience



Users

# ICCA – Basic questions



## Hardware

**H1** – Is there a real cycle network in your city already? (instead of fragmented collection of cycle lanes, paths, etc.)?

<yes / no>

**H1a** – Or one or more isolated small networks?

<yes / no>



Network



# ICCA – Basic questions



## Hardware

**H2** – Are traffic calming measures implemented?

<yes / no>



Traffic

# ICCA – Basic questions



## Hardware

**H3** – Are there any bicycle parking facilities near homes, shops, and/or businesses?

<yes / no>

**H3a** – If yes, how so?

<text>



Cycling facilities

# ICCA – Basic questions



## Hardware

**H4** – Is there in your city a bicycle sharing system in place (for locals and/or tourists)?

<yes / no>

**H4a** – If no, any trials or failed bicycle sharing projects in the past?

<yes / no>



Cycling facilities

# ICCA – Basic questions



## Hardware

**H5** – What types of bicycles are used in your city?

<classic ‘Dutch’, sport, common local, other>

**H5a** – How about the use of e-bikes?

<text>



Technology

# ICCA – Basic questions



## Hardware

**H6** – Is cycle infrastructure qualitatively improved [last 5 years]?

<yes / no / unknown>



Infrastructure

# ICCA – Basic questions



## Hardware

**H7** – Is quality of public space improved due to cycling [last 5 years]?

<yes / no / unknown>

**H7a** – If yes, can you give an example?

<additional information, e.g., drawing or picture>



Public realm

# ICCA – Basic questions



## Hardware

H8 – Additional information?

<separate data collection>



Logistics



Equipment



Technology



Management &  
maintenance

# ICCA – Basic questions



## Software

**S1** – A city cycling map is publicly available?

<yes / no>



Info



Maps



# ICCA – Basic questions



## Software

**S2** – Does your city have a bicycle plan?  
Or is cycling part of city's urban master plan?

<yes / no>



Plans  
&  
designs

# ICCA – Basic questions



## Software

**S3** – Does your city carry out any cycle-marketing?

<yes / no>



Promotion & information

# ICCA – Basic questions



## Software

**S4** – Does cyclist in your country/city have specific legal status?

<yes / no>

**S4a** – If yes, is cycling legally perceived as normal traffic?

<yes / no>



Laws &  
rules

# ICCA – Basic questions



## Software

**S5** – Are cyclists required to wear a helmet by law?

<yes / no>

**S5a** – If no, is the use of a helmet customary?

<yes / no>



Laws &  
rules

# ICCA – Basic questions



## Software

**S6** – Are there any cycling events in your city?

<yes, yearly / yes, monthly / yes, other / no>



Projects  
& events

# ICCA – Basic questions



## Software

**S7** – Is there any applied and/or scientific research into cycling?

<yes / no>

**S7a** – If yes, can you give an example?

<additional information>



Research

# ICCA – Basic questions



## Software

**S8** – Are there ideas and/or initiatives to stimulate cycling?

<yes / no>

**S8a** – If yes, can you give an example?

<additional information>



Ideas &  
proposals

# ICCA – Basic questions



## Software

S9 – Additional information?

<separate data collection>



Guidelines  
& standards



Designs  
& plans



Budgets



Policy &  
programs



Education &  
research



# ICCA – Basic questions



## Orgware

**01** – Are there any cycling advocacy's active in your city?

<yes / no>



Fora of  
Decision  
making



Cycling  
advocacy

# ICCA – Basic questions



## Orgware

**O2** – Cycle grassroots co-operate with public and administration or politics?

<yes / no / not relevant>



Co-operation  
& organization



Fora of  
Decision  
making



Grassroots

# ICCA – Basic questions



## Orgware

**O3** – Are there dedicated budgets for cycling?

<yes / no>

**O3a** – If yes, how many, or much?

<value>



Fora of  
Decision  
making



Financing  
& funding

# ICCA – Basic questions



## Orgware

**04** – Does your city deploy dedicated staff to cycling?

<yes / no / unknown>

**04a** – If yes, how many?

<value>



Cycling  
staff

# ICCA – Basic questions



Orgware

O5 – Additional information?

<separate data collection>



Co-operation  
& organization



Fora of  
Decision  
making



Media



Administration  
& registration

# ICCA – Conclusions



Atlas



Context



General



Hardware



Software



Orgware

End of questionnaire

# ICCA – Other activities



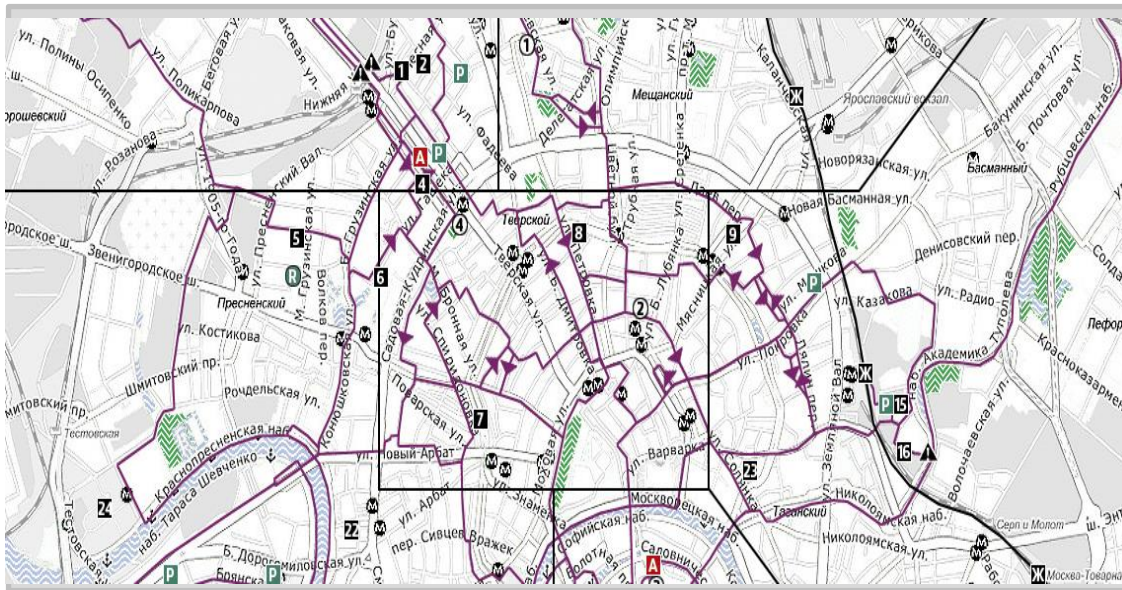
Cycling research and consultancy



# ICCA – Other activities



## Workshop Network design & development



Designs  
& plans



Networks



Ideas &  
proposals



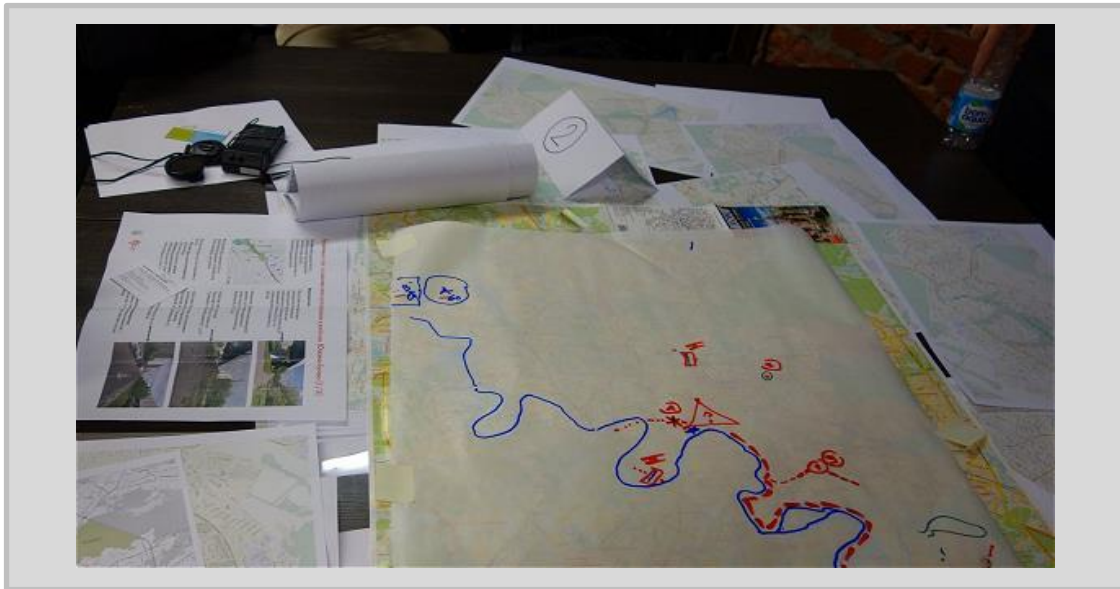
Logistics



# ICCA – Other activities



## Workshop Infrastructure and technology



Designs  
& plans



Networks



Technology

# ICCA – Other activities



## Workshop Organization and governance



Policy & programs



Projects & events



Laws & rules



Budgets

# ICCA – Other activities



## Workshop Safety and cycling



Safety



Ideas & proposals



Designs & plans



Networks



Guidelines & standards

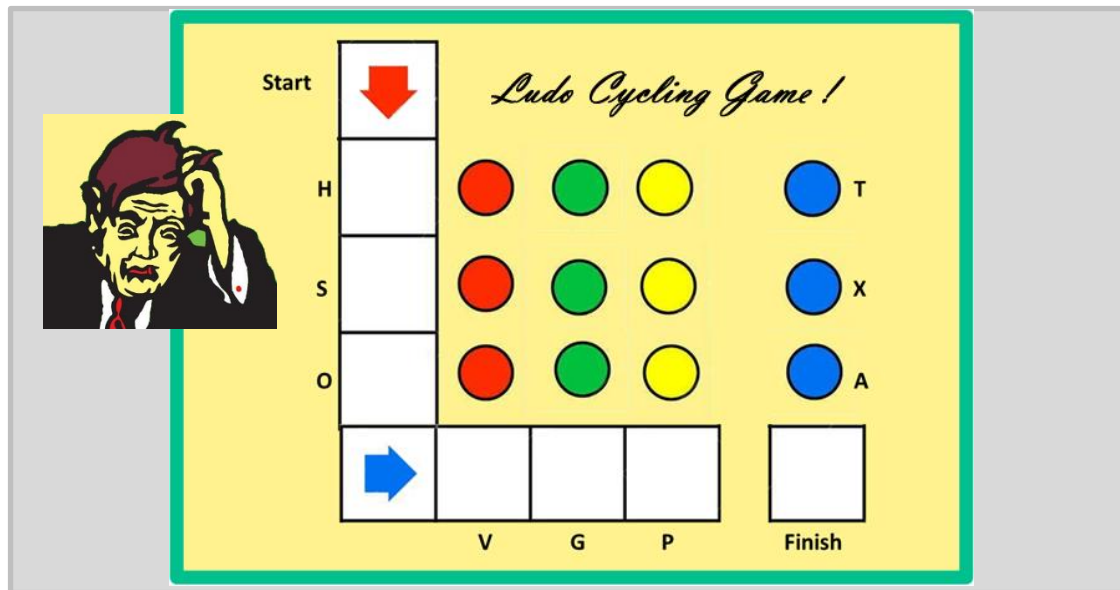


Education & research

# ICCA – Other activities



The cycling game – all topics



# ICCA – Other activities



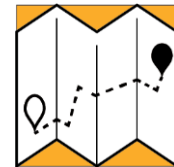
Study tours cycling cities



History



Example City



Maps



Images

# ICCA – Information

= robvanderbijl@gmail.com  
= maurits@bikeminded.nl  
= info@dutchcycling.nl

**GoDutchCycling**

RVDB Urban Planning / Lightrail.nl

**Bike** minded  
Design Consulting



## The basic tool

International City Cycling Assessment

# ICCA – Sources, copyrights



**GoDutchCycling**  
RVDB Urban Planning / Lightrail.nl

**Bike** minded  
Design Consulting



The basic tool (v2.1) concept and all related texts, images, diagrams and icons © GoDutchCycling & Bike minded.

The basic tool is endorsed by Dutch Cycling Embassy.

Special thanks to: Reindert Augustijn, Chris Bak, Mirjam Borsboom, Estella Hollander, and many others.

Amsterdam/Delft/Rotterdam, Netherlands, September 18, 2018